

# Shah Family Global Innovation Lab I<sup>2</sup>D Exposition Panel

**May 4, 2021**

**11:00-12:30 PM, EST**

**Needs Assessment and Human Centric Design**



**MOLLY FITZGERALD** ASSOC.  
DIRECTOR, INNOVATION &  
SENIOR TECH. ADVISOR  
FOR HEALTH  
PLAN USA



**PETER MACHARIA**  
SENIOR DIRECTOR OF  
OPERATIONS  
WORLD CONCERN



**REHANNA RIYAWALA**  
VICE PRESIDENT  
SEWA



**HEIDI AROLA**  
DIRECTOR OF GLOBAL  
PARTNERSHIPS, PURDUE-  
INDIA PARTNERSHIP,  
PURDUE UNIVERSITY

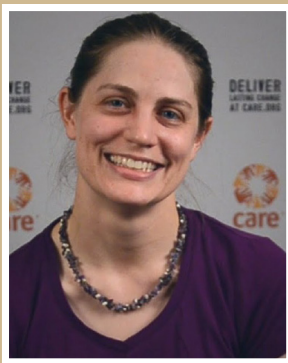
**May 5, 2021**

**11:00-12:30 PM, EST**

**Iterative Implementation and Adaptation**



**MICHAEL WOOLCOCK**  
LEAD SOCIAL SCIENTIST,  
DEV. RESEARCH GROUP  
WORLD BANK



**EMILY JANOCH**  
DIRECTOR OF  
KNOWLEDGE  
MNGMT & LEARNING  
CARE



**DEIDRA FAIR JAMES**  
DIRECTOR OF FINANCE  
INVESTMENT &  
TRADE GROUP  
MCC



**RAJANI SHRESTHA**  
PROJECT DIRECTOR,  
QITABI & QITABI2  
GLOBAL DEV. DIVISION  
WORLD LEARNING



**DIANA HARBISON**  
ASSISTANT DIRECTOR  
FOR INTERNATIONAL  
DEVELOPMENT, GEPP,  
PURDUE UNIVERSITY

**May 6, 2021**

**11:00-12:30 PM, EST**

**Scaling for Impact**



**AMOS WINTER**  
ASSOCIATE PROFESSOR  
AND DIRECTOR OF GLOBAL  
ENGINEERING & RESEARCH  
MIT



**VIJAY MAHAJAN**  
SECRETARY AND CEO  
RGF



**ESTHER OBONYO**  
ASSOCIATE PROFESSOR  
OF ENGINEERING DESIGN  
& ARCHITECTURAL ENGR  
PENN STATE



**PALLAVI GUPTA**  
PROGRAM DIRECTOR,  
LASER PULSE,  
PURDUE UNIVERSITY

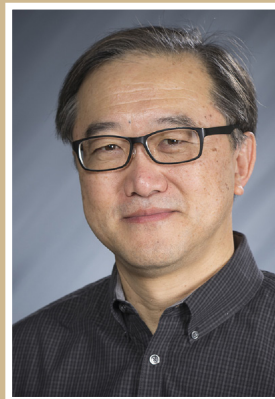
**May 7, 2021**

**11:00-12:30 PM, EST**

**Keynote Address & Seed Grant Awards**



**MANU SHAH**  
CEO  
M S INTERNATIONAL INC.



**GEORGE CHIU**  
ASST. DEAN OF GEPP  
PURDUE UNIVERSITY

[Register for Panels](#)

[For more information on the 2021 I2D Expo](#)