

DECEMBER 4, 2017
3:30PM - 5:00PM
WALC 3084

Experimental Methods for the Environmental and Social Sciences

Light refreshments, coffee, and tea will be provided

JONATHAN BAUCHET



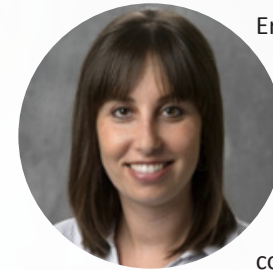
Jonathan Bauchet is an assistant professor in the Department of Consumer Science. His research interests are in international development, particularly focusing on the financial life of poor households in developing countries. He mostly employs randomized control trials in the field to measure the impact of international development programs and policies. His recent work has notably examined the demand for microinsurance in Mexico and Colombia, the impact of improved post-harvest practices among smallholder farmers in Senegal, as well as the impact of an innovative anti-poverty program in Andhra Pradesh, India.

TRENTON MIZE



Trenton Mize is an assistant professor of sociology at Purdue University and a part of the cluster in advanced methodologies for the social, behavioral, and health sciences. Broadly, his research focuses on (1) gender and sexuality, (2) health behavior, and (3) quantitative methodology. Recent publications examine pay discrepancies based on sexual orientation (American Sociological Review), gender inequalities in leadership positions (Social Problems), and the relationship between social role occupancy and health behavior (Social Science & Medicine). Current projects include studies of sexual orientation categorization, stereotypes of gender and sexuality, and multiple projects on experimental methodology and cross-model comparisons of statistical effects.

ERIN HENNES



Erin Hennes is an Assistant Professor in the Department of Psychological Sciences and an affiliate of the Center for the Environment and the Purdue Climate Change Research Center. Dr. Hennes and her students examine cognitive and motivational biases in information processing, particularly in the context of contemporary social issues such as environmental sustainability and racial and gender inequality. Dr. Hennes takes a multi-method, interdisciplinary approach that integrates data from laboratory experiments, public opinion surveys, focus group interviews, and longitudinal field research to investigate how information and misinformation is encoded, elaborated, and disseminated.

The C4E Building Sustainable Communities methods series brings together a group of diverse scholars to discuss relevant methods for addressing global social and environmental challenges with the goal of enhancing the methods literacy of faculty and students at Purdue. Topical workshops will feature presentations from several experts followed by an interactive discussion with attendees.

Everyone is welcome to attend. For questions, please contact Laura Zanotti (lzanotti@purdue.edu) or Zhao Ma (zhaoma@purdue.edu).