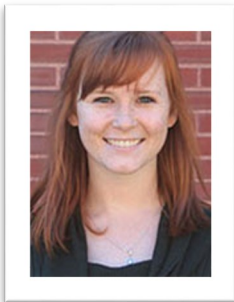


# Road M@P to Success

Volume 2 / Issue 2

Meet a Member of the M@P Team:

*Liz Alexander*



Liz Alexander is a Master's student in Agricultural Sciences Education and Communication. A Boilermaker alum, she received her Bachelor's in Animal Sciences in 2016. She returned home to central Indiana to work as an informal agricultural educator at Conner Prairie, where she trained youth, developed STEM programming, and engaged the public. A year later she decided to pursue a graduate degree that would provide her the training and skills she needs to better share her passion for agriculture.

Given exceptional faculty, global vision, and renowned research, returning to Purdue was an easy decision. Liz is a member of the Community Engagement team for an NSF grant-funded project titled, "Modeling Agri-Life Sciences through STEM Integration (M.A.L.T.S.)", in which she coordinates parent and community engagement to complement the classroom learning experiences. Through community involvement, the M.A.L.T.S. team aims to encourage culturally relevant STEM learning and real-world problem solving and to increase career interest in agricultural life sciences. Liz also coordinates the Mentoring@Purdue on-campus workshops for faculty and graduate students in the College of Agriculture. In the Future, Liz intends to pursue a career in informal education as an extension coordinator or in a food insecurity focused non-governmental organization.

*If you, or someone you know who also participated in the M@P-SSP, has done something you would like to share, please let us know! We would be happy to feature you in an upcoming issue. Simply email Liz at alexan42@purdue.edu for more information!\**

## Upcoming Events

### Invited Lecture Series 2019

March 3-5, 2019  
(Location and Times TBD)

### M@P Summer Scholars Program

June 23-28, 2019  
Application Deadline:  
March 1, 2019

### Join us via Webex:

<https://purdue.webex.com/meet/alexan42>



[www.asec.purdue.edu/MAP](http://www.asec.purdue.edu/MAP)



[Facebook.com/MentoringatPurdue](https://www.facebook.com/MentoringatPurdue)



[@MAP\\_Purdue](https://twitter.com/MAP_Purdue)

## *We Can Help!*

Because you were a previous participant of the M@P program, we can offer you a **FREE**

### **GRADUATE SCHOOL APPLICATION CONSULTATION!**

Please send your graduate school application materials to alexan42@purdue.edu for feedback. We want to help you succeed!

*"We're here for a reason. I believe a bit of the reason is to throw little torches out to lead people through the dark." – Whoopi Goldberg*

## M@P Invited Lecture Series 2019



M@P has invited Stacy Blake-Beard, Ph.D. to Purdue University for the annual Invited Lecture Series from March 4-5, 2019. Dr. Blake-Beard is a Professor of Management at Simmons University in Boston, MA. She has also worked at Harvard University, Procter & Gamble, and Xerox. Dr. Blake-Beard received her BS in Psychology from the University of Maryland at College Park. She obtained both her MA and PhD in Organizational Psychology from the University of Michigan.

Dr. Blake-Beard's research focuses on mentoring relationships and the challenges and opportunities that they present. She also has interest exploring how women navigate mentoring relationships, the dynamics of formal mentoring programs, and numerous other areas.

The M@P team is excited to have her coming to campus, and hope you will be too! More details about the Invited Lecture Series will be available as the date draws nearer. Find more information about Dr. Blake-Beard by visiting her personal website or faculty page:

<http://www.simmons.edu/Faculty/Stacy-BlakeBeard>  
<https://stacyblakebeard.com/>



## M@P Summer Scholars Program

Join M@P at our 6<sup>th</sup> Annual Summer Scholars Program for students from 1890 Historically Black Land-Grant Universities on June 23–28, 2019.

M@P-SSP is built around preparing students to enter graduate school. There will be workshops on completing graduate school applications, obtaining funding, and taking the GRE. Scholars will have the opportunity to visit and meet with potential faculty advisors. Scholars will also visit research facilities, various graduate program, the Black Cultural Center, and many other locations across Purdue's campus.

Apply today by visiting our website:

<https://www.asec.purdue.edu/map/form.cfm>



**SSP Application Deadline:  
Friday, March 1, 2019**



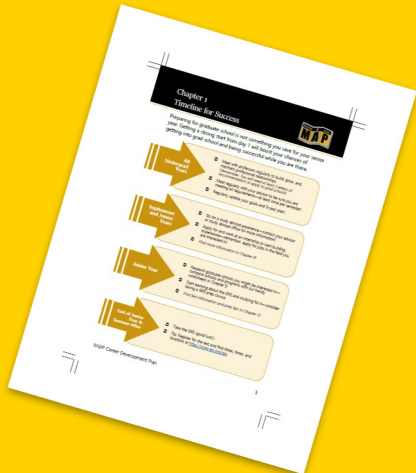
## Mentoring@Purdue Resource Guide

The Mentoring@Purdue Resource Guide was written and compiled by Dottie Vollmer, a graduate from the Agricultural Science Education and Communication (ASEC) department in the College of Agriculture at Purdue University. The guide was created with the help and guidance of Drs. Levon Esters and Neil Knobloch, the Co-Directors of the Mentoring@Purdue Program and faculty in the ASEC department.

The guide is meant to assist undergraduate students with getting a head start in preparing for graduate school. The guide outlines the graduate school application process. It explores everything from finding letter of recommendation writers to approaching possible faculty advisors to taking the GRE.

Check out the resource guide today by visiting our website and searching under the Mentoring Resources Section:

<https://www.asec.purdue.edu/map/>



## Other Resources

Did you know Mentoring@Purdue also has many other resources available on our webpage? If not, be sure to check out some the interesting guides, articles, presentations, and other information that are all linked under the resource section on our website.

One example of our many resources explores the graduate student/faculty mentoring relationship. Find this article at the following link: <https://www.tandfonline.com/doi/pdf/10.1080/01463379709370054>

Another resource of ours connects you with MENTOR: The National Mentoring Partnership, which has a mission of expanding the mentorship that youth receive across the nation: Find MENTOR at: <https://www.mentoring.org/>

If you have any resources that you would like to share with others, send the link to Zac at [brow1688@purdue.edu](mailto:brow1688@purdue.edu), and we will consider adding it to our resources!